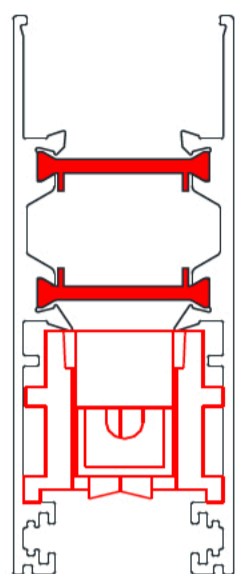
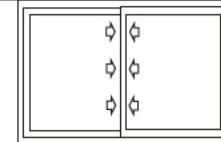
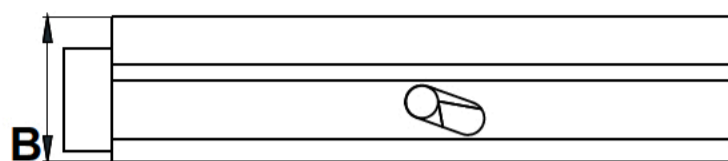


# CARCASAS PARA CORREDERAS

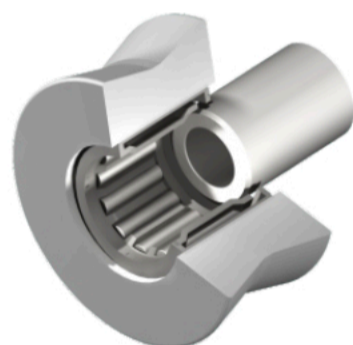
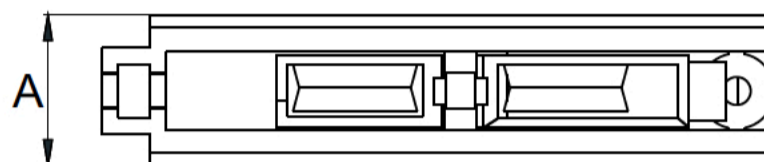
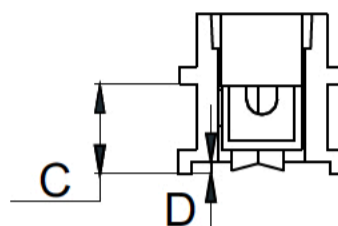
Carcasas plasticas tandem regul. Rod Aguja  
Adjustable Nylon Roller with two wheels - Chariot en Nylon Réglable à deux roues



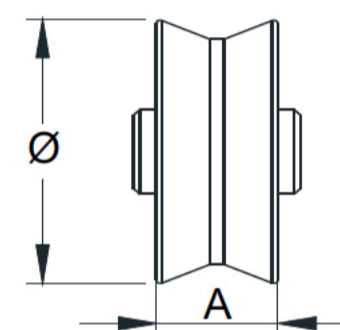
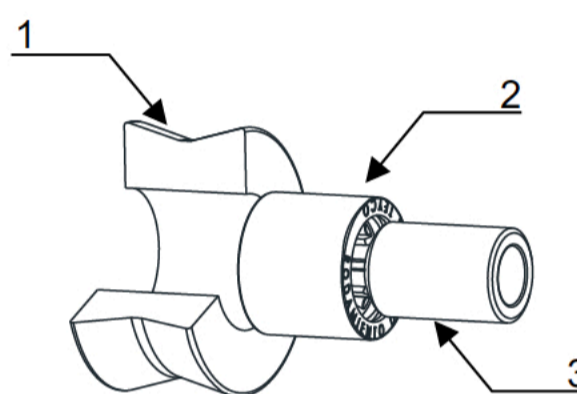
	Steel Acero
	INOX
	Nylon
	ZN



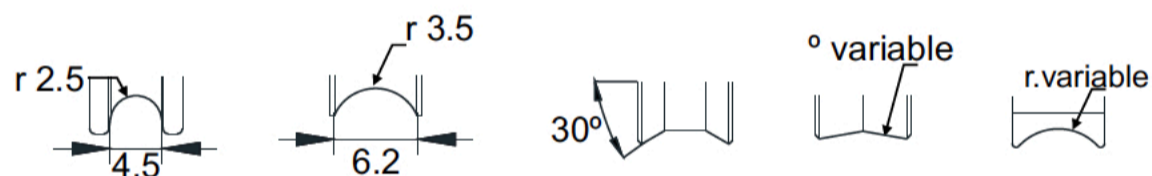
A= variable  
B= variable



1	DELRIN
2	Steel Acero
3	INOX



Ø= variable  
A= variable



Serie	Ref.	mm					Regulacion	mm		Unid.
		A	B	C	D	A		Ø		
S/PCW70	130	22	26.8	-	-	±1	10	22	150	
S/ALC-96	135	22	22.25	-	-	±1	10	22	100	
S/VC83,CWR85	137	27.9	26.8	15	4	±1	10	22	200	

## ENSAYOS

KM.	KG/RUEDA	VEL.	TOTAL
40 KM.	50 KG	2 MT/SG.	100 KG.