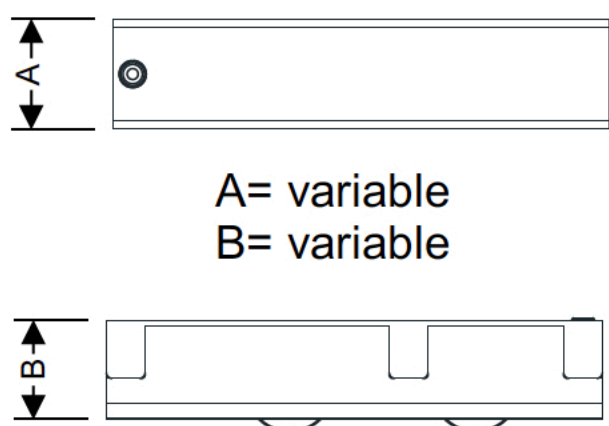
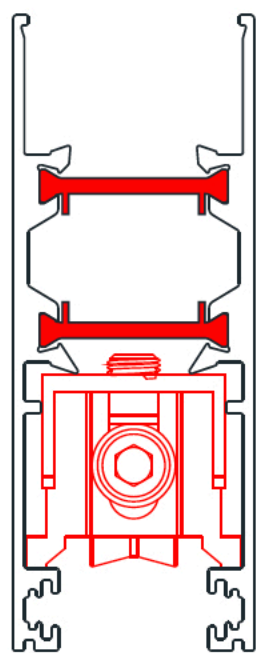
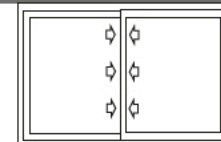
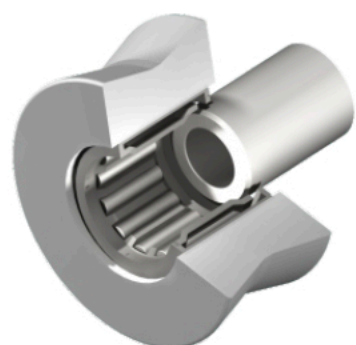
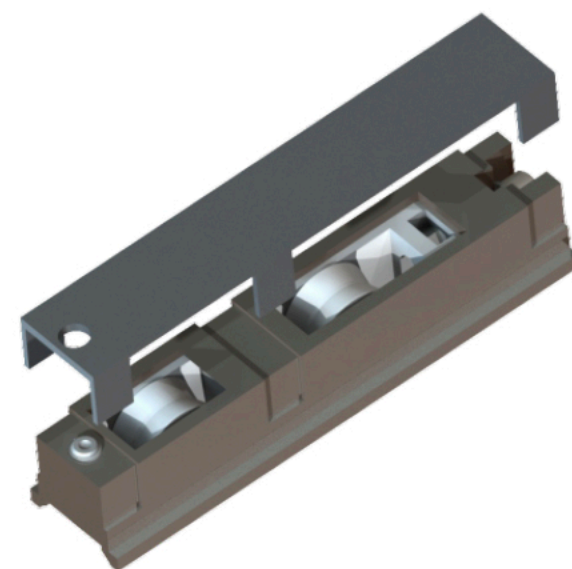


# CARCASAS PARA CORREDERAS

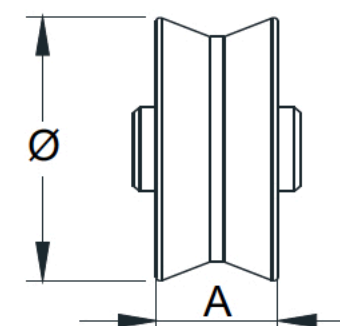
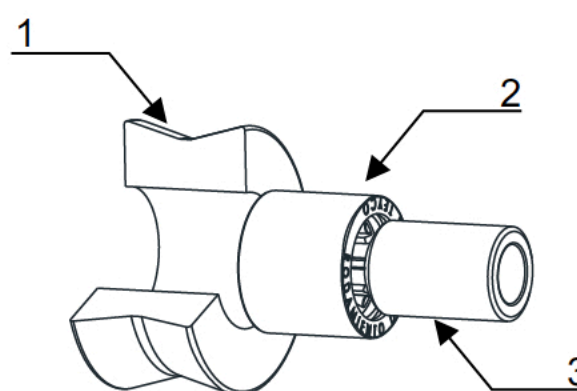
Carcasas Tandem de Zamak Reg. Rod. de Agujas  
Adjustable Zamak Roller with two wheels-Chariot en Zamak réglable à deux roues



	NYLON
	INOX
	INOX
	ZN
	ZN



1	DELFIN
2	Steel Acero
3	INOX



Ø= variable  
A= variable



Serie	Ref.	mm				Regulacion	mm		Unid.
		A	B	C	D		A	Ø	
S/VPC83	197	28	18	-	-	±2	8	22	100

## ENSAYOS

KM.	KG/RUEDA	VEL.	TOTAL
40 KM.	50 KG	2 MT/SG.	100 KG.